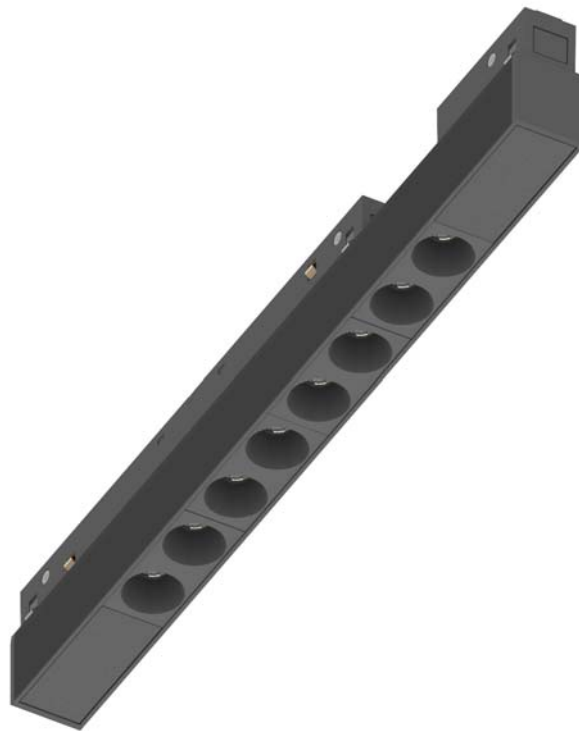


Low Voltage Track System Module ML26-AL280-9W-927-20



Light Output Ratio:	100.0%	
Luminaire Power:	8.976 W	
SHR Nominal:	0.00	Calculated using the TM5
SHR Maximum:	1.00	fine grid method.

C Range: 0 - 360DEG
C Interval: 15.0DEG
Test Speed: HIGH
Temperature: 25.3DEG
Operators: Jason
Test Date: 2020-05-13

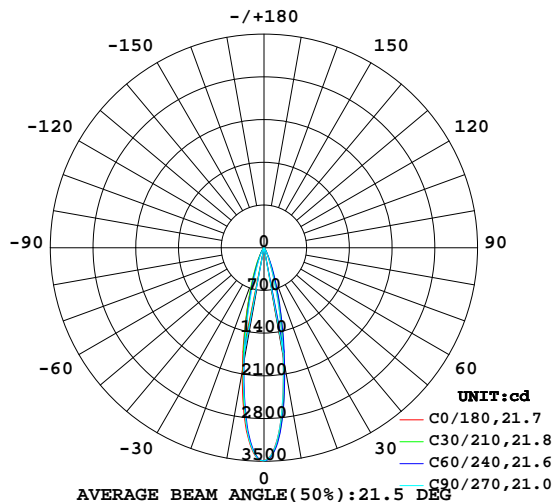
γ Range: 0 - 90DEG
γ Interval: 0.5DEG
Test System: EVERFINE GO-2000B_V1 SYSTEM V2.0.362
Humidity: 58%
Test Distance: 5.850m [K=1.0000]
Remarks:

LUMINAIRE PHOTOMETRIC TEST REPORT

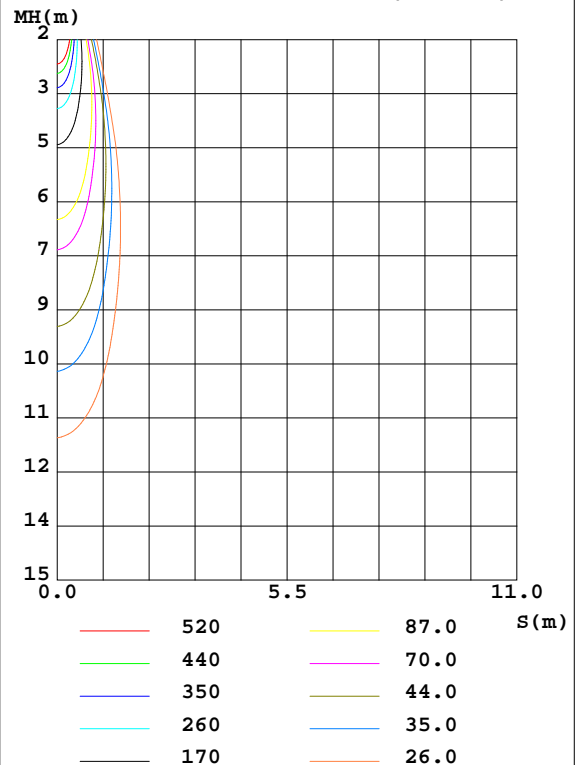
Test:U:48.00V I:0.1870A P:8.976W PF:1.000 Freq:0Hz Lamp Flux:686.442x1 lm		
NAME: ML26-AL280-9W-927-20	TYPE:Low Voltage Track System Module	
SPEC.:2700K	DIM.: L284mm*W22mm*H43mm	
MFR.: NEKO LIGHTING AG		

DATA OF LAMP		PHOTOMETRIC DATA Eff: 76.48 lm/W			
MODEL	OSRAM-2700K	I _{max} (cd)	3495	S/MH(C0/180)	0.39
NOMINAL POWER(W)	9	LOR(%)	100.0	S/MH(C90/270)	0.37
RATED VOLTAGE(V)	48	TOTAL FLUX(lm)	686.44	η UP,DN(C0-180)	0.0,50.4
NOMINAL FLUX(lm)	686.442	CIE CLASS	DIRECT	η UP,DN(C180-360)	0.0,49.6
LAMPS INSIDE	1	η up(%)	0.0	CIBSE SHR NOM	0.00
TEST VOLTAGE(V)	48	η down(%)	100.0	CIBSE SHR MAX	1.00

LUMINOUS INTENSITY DISTRIBUTION DIAGRAM



C0 PLANE ISOLUX DIAGRAM (UNIT:lx)



C Range: 0 - 360DEG
 C Interval: 15.0DEG
 Test Speed: HIGH
 Temperature:25.3DEG
 Operators:Jason
 Test Date:2020-05-13

γ Range: 0 - 90DEG
 γ Interval: 0.5DEG
 Test System:EVERFINE GO-2000B_V1 SYSTEM V2.0.362
 Humidity:58%
 Test Distance:5.850m [K=1.0000]
 Remarks:

ZONAL FLUX DIAGRAM

ZONAL FLUX DIAGRAM:

γ	C0	C45	C90	C135	C180	C225	C270	C315	γ	Φ zone	Φ total	%lum, lamp
10	1808	1971	1817	2025	2048	1898	1909	1859	0- 10	251.0	251.0	36.6,36.6
20	343.8	533.5	342.3	568.5	506.4	526.2	365.1	478.5	10- 20	277.7	528.8	77,77
30	80.42	105.2	67.30	141.2	110.3	128.9	76.87	93.15	20- 30	101.4	630.2	91.8,91.8
40	26.50	28.52	18.62	34.40	31.88	34.41	21.19	28.97	30- 40	33.27	663.5	96.7,96.7
50	12.60	13.80	8.732	16.86	13.65	16.40	8.590	13.63	40- 50	14.43	677.9	98.8,98.8
60	1.030	1.354	0.6537	1.389	0.9233	1.398	0.8169	0.9365	50- 60	7.356	685.3	99.8,99.8
70	0.6203	0.4808	0.3827	0.3148	0.6262	0.6519	0.5308	0.2778	60- 70	0.6167	685.9	99.9,99.9
80	0.2808	0.1835	0.1750	0.1901	0.3633	0.4047	0.3124	0.1247	70- 80	0.3805	686.3	100,100
90	0.1424	0.1903	0.0612	0.0962	0.1621	0.1815	0.1377	0.0721	80- 90	0.1827	686.4	100,100
100									90-100			
110									100-110			
120									110-120			
130									120-130			
140									130-140			
150									140-150			
160									150-160			
170									160-170			
180									170-180			
DEG	LUMINOUS INTENSITY:cd									UNIT:lm		

Conical surface Flux(90deg): 671.75 lm

%lum = 97.9%

%lamp = 97.9%

Conical surface Flux(120deg): 685.26 lm

%lum = 99.8%

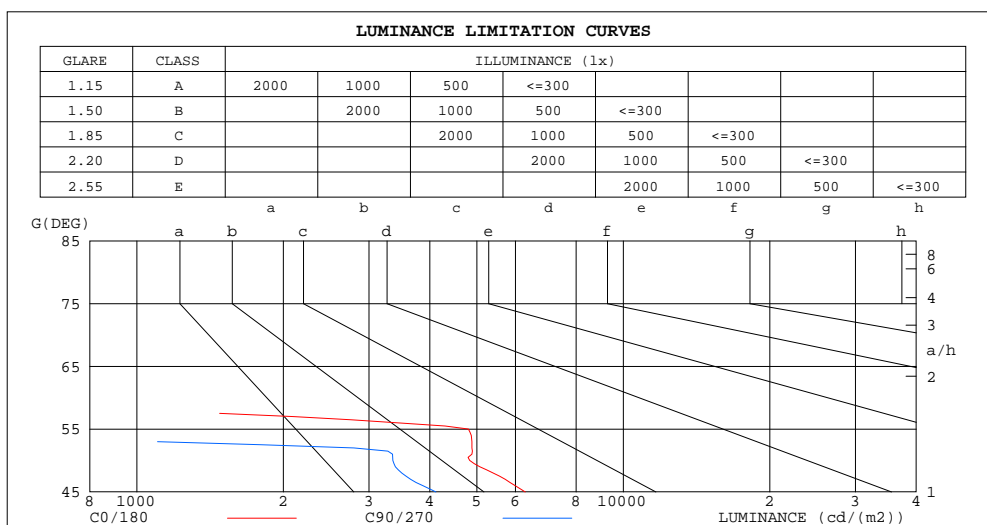
%lamp = 99.8%

C Range: 0 - 360DEG
C Interval: 15.0DEG
Test Speed: HIGH
Temperature:25.3DEG
Operators:Jason
Test Date:2020-05-13

γ Range: 0 - 90DEG
 γ Interval: 0.5DEG
Test System:EVERFINE GO-2000B_V1 SYSTEM V2.0.362
Humidity:58%
Test Distance:5.850m [K=1.0000]
Remarks:

LUMINANCE LIMITATION CURVES

Test:U:48.00V I:0.1870A P:8.976W PF:1.000 Freq:0Hz Lamp Flux:686.442x1 lm		
NAME: ML26-AL280-9W-927-20	TYPE:Low Voltage Track System Module	
SPEC.:2700K	DIM.: L284mm*W22mm*H43mm	
MFR.: NEKO LIGHTING AG		



LUMINANCE cd/(m2)		
G(DEG)	C0/180	C90/270
85	367	242
80	399	249
75	422	261
70	447	277
65	472	297
60	508	323
55	4803	369
50	4833	3357
45	6287	4119

C Range: 0 - 360DEG
C Interval: 15.0DEG
Test Speed: HIGH
Temperature:25.3DEG
Operators:Jason
Test Date:2020-05-13

γ Range: 0 - 90DEG
γ Interval: 0.5DEG
Test System:EVERFINE GO-2000B_V1 SYSTEM V2.0.362
Humidity:58%
Test Distance:5.850m [K=1.0000]
Remarks:

CU AND LUMINAIRE BUDGETARY ESTIMATE DIAGRAM

Test:U:48.00V I:0.1870A P:8.976W PF:1.000 Freq:0Hz Lamp Flux:686.442x1 lm		
NAME: ML26-AL280-9W-927-20	TYPE:Low Voltage Track System Module	
SPEC.:2700K	DIM.: L284mm*W22mm*H43mm	
MFR.: NEKO LIGHTING AG		

pcc	80%			70%			50%			30%			10%			0
pw	50%	30%	10%	50%	30%	10%	50%	30%	10%	50%	30%	10%	50%	30%	10%	0
pfc	20%			20%			20%			20%			20%			0
RCR	RCR:Room Cavity Ratio															

